



## What I already know

- The different countries that make up the United Kingdom
- Know the British Values
- That people have different cultures, skin tone, language and religions.



## Big Question

Where would you rather live?

# Geography

## Year 3

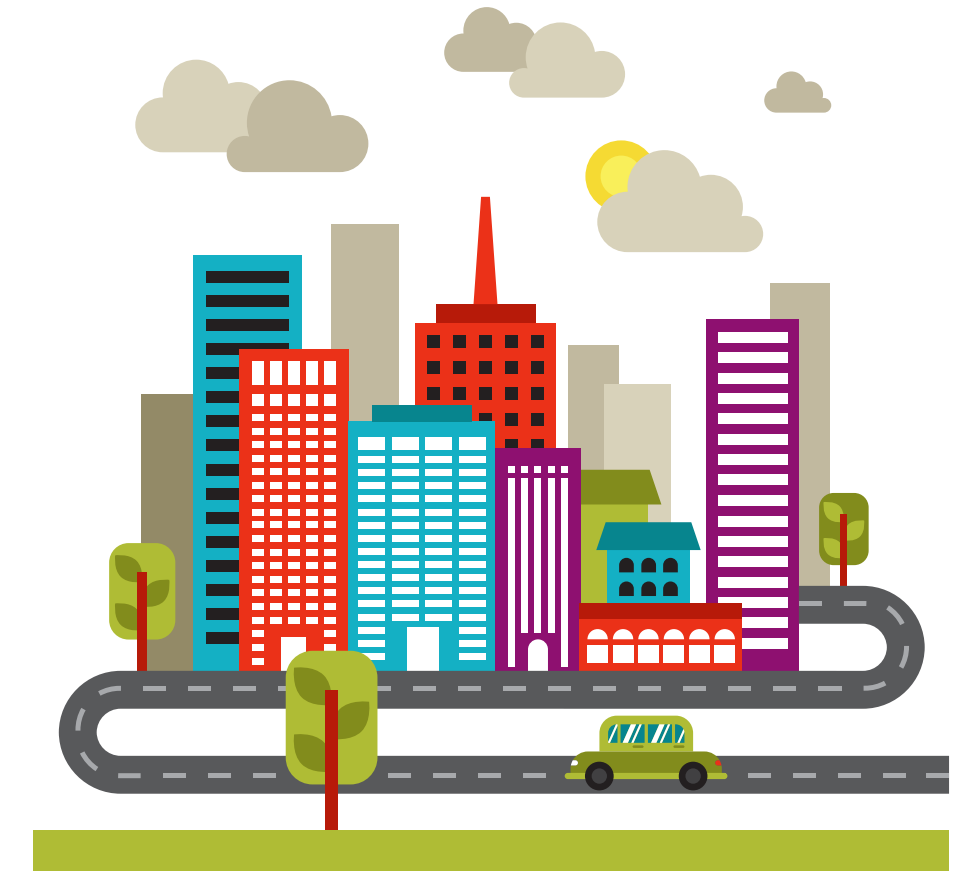
### From the Sea to the City

## Sticky Knowledge

- I can name the Countries and Seas of the UK
- I can locate Cornwall on a map and some key locations
- To identify physical features on a map that include: rivers, landmarks and mountains in the UK
- To identify human features on a map that include: settlements, railway tracks and roads in the UK
- I know the points of a compass

## Vocabulary

•County, country, village, town, city, coastal, map, atlas, settlement, urban, rural, environment, population





## What I already know

--Children know the areas of the UK and Cornwall.

Children know of different types of weather.

Children can identify some of the negative effects weather has.



## Big Question

**Does the weather affect your mood?**

# Geography

## Year 4

# Extreme Weather

## Sticky Knowledge

- I can identify rivers, lakes and mountains in other European countries on a Map
- I know the currency and languages spoken in other European countries.
- I can list how the UK is different/similar to other European countries
- I can identify churches, roads, rivers and hills (higher ground) on an OS map
- I can use digital mapping to locate geographical features across Europe
- I know what causes a volcanic eruption and an earthquake
- I can what a natural disaster is and give examples of natural disasters that have happened in Europe.

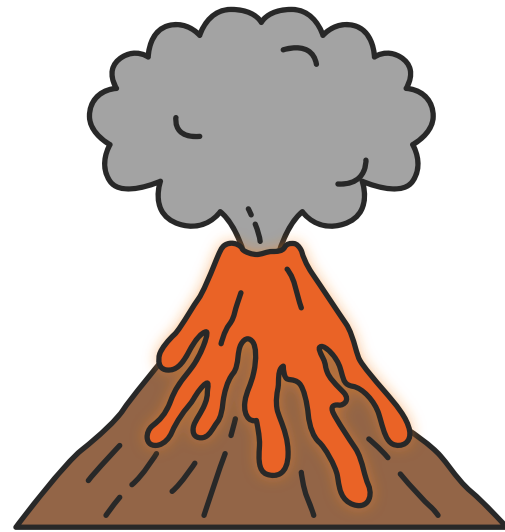
## Vocabulary

tropical storm, hurricane, typhoon, cyclone, tornado, drought, flood, wildfire, evaporation, condensation, precipitation, physical features, human features, population, currency, ordinance survey, volcanoes, earthquakes



## What I already know

- Japan is in Asia
- There are 7 continents
- Volcanoes and earthquakes are natural disasters
- Japanese culture is different to the UK
- Physical and human characteristics of the UK.



## Big Question

Should I live in Japan?

# Geography

## Year 6

# Japan: Natural Disasters

## Sticky Knowledge

- I can locate Japan on a world map
- I can explain what tectonic plates are
- I can explain what an earthquake is
- I can explain what a volcano is
- I can explain what a biome is
- I can explain what a climate is and why it is important
- List at least three environmental differences between Japan and Cornwall (hemisphere/time zone/natural disasters)

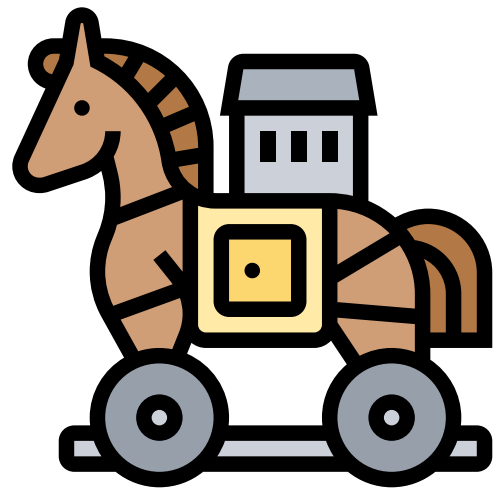
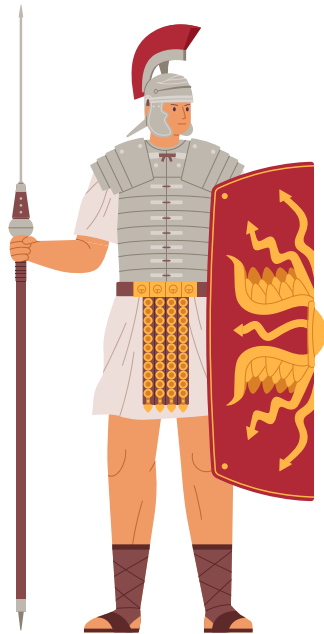
## Vocabulary

Volcano, tsunami, earthquake, tectonic plates, tremor, magma, lava, seismic, Richter scale, fault, biomes, climate, settlements, vegetation, hemisphere



## What I already know

- Know that Greece and Rome are located in Europe.
- The Greeks and Romans are both civilisations that lived long ago.
- Know some Greek myths and legends.



## Big Question

Would you have rather been an Ancient Greek or Roman?

# History

## Year 5

### Ancient Romans v Ancient Greeks

## Sticky Knowledge

- Julius Caesar was probably the best known Roman leader. Londinium He extended the empire by invading other lands.
- Boudicca was a queen of the British Celtic Iceni Tribe who led an uprising against the occupying forces of the Roman Empire.
- The Romans invaded Britain in 43AD and ruled for around 400 years.
- Roman soldiers were strong and tough. They had to carry their equipment such as tents, weapons, cooking pots as well as wearing their armour across the north of England.
- Rich Romans liked to eat exotic food, such as stork, roast parrot and even flamingo!
- When the Romans came to Britain they helped us by creating roads; a written language (which was Latin); introducing coins, straight roads, laws and a legal system.

## Vocabulary

Senate, philosophy, Polis, consul, Empire, Emperor, democracy, government, mythology, Olympics, invade, Gods/Goddesses.



## Golden Thread

- Invasion
- Exploration
- Change